



FLORIDA DEPARTMENT OF TRANSPORTATION US 27 FROM SOUTH OF TOWER STREET TO NORTH OF TOWER STREET AND US 27 FROM SHORELINE DRIVE TO DAVIS AND GAINES ROAD

Financial Project ID: 442765-1, 446207-1

June 2025

Highlands County, FL

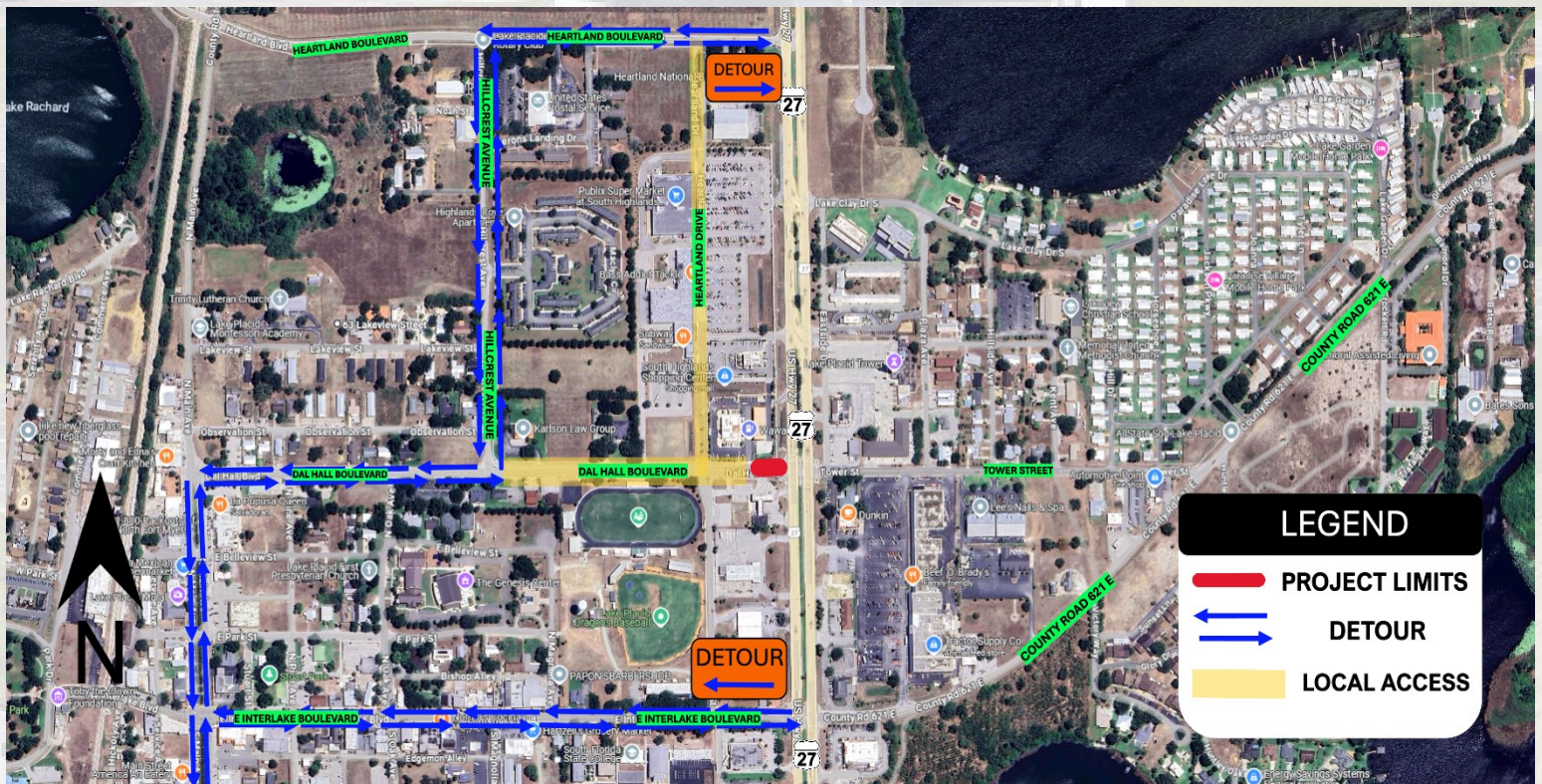
CONSTRUCTION DETAILS

The Florida Department of Transportation will begin a 21-day closure of Dal Hall Boulevard at the intersection of US 27 in June 2025. The closure will allow crews to begin repaving work as part of a broader improvement project along US 27. The project includes milling and resurfacing of US 27 from Shoreline Drive to Davis and Gaines Road, covering approximately seven miles. The estimated cost of the project is \$28 million.

DETOUR ROUTES

- Northbound and southbound traffic on US 27 will be detoured via Heartland Boulevard or East Interlake Boulevard, with local access maintained along Heartland Drive for residents, businesses and shopping plaza visitors.
- Local traffic on Dal Hall Boulevard will be redirected to Hillcrest Avenue and Heartland Boulevard for northbound travel, or to East Interlake Boulevard for southbound travel.
- Detour for Tower Street will be in effect after the Dal Hall construction, with the detour route at the back of this page.

Detour Map



CONTACT US

Aika Ranieri
Community Outreach Specialist
(863) 464-0743
Ai.Ranieri@dot.state.fl.us

or

Janella Newsome
Director of Public Information
(863) 519-2828
Janella.Newsome@dot.state.fl.us

FOLLOW US

www.SWFLroads.com | [X.com/MyFDOT_SWFL](https://x.com/MyFDOT_SWFL) | facebook.com/MyFDOTSWFL | instagram.com/myfdot_swfl



FLORIDA DEPARTMENT OF TRANSPORTATION US 27 FROM SOUTH OF TOWER STREET TO NORTH OF TOWER STREET AND US 27 FROM SHORELINE DRIVE TO DAVIS AND GAINES ROAD

DETOUR INFORMATION

The detour for Tower Street will commence after the completion of construction work on Dal Hall Boulevard. The detour routes are indicated for local traffic and for truck traffic. Trucks will follow County Road 621 to bypass the construction zone efficiently.

DETOUR ROUTES

- Local traffic traveling northbound and southbound will be redirected via Lake Clay Drive to Plaza Avenue, and then back to US 27.
- Northbound and southbound lanes on US 27 will remain open for trucks. Trucks may also use the detour via County Road 621 to bypass the Tower Street construction area if needed.
- US 27 will remain open with intermittent lane closures throughout the construction period for through traffic.

Detour Map



STAY INFORMED

<https://www.swflroads.com/project/446207-1>

<https://www.swflroads.com/project/442765-1>