



Existing Peak Hour Turning Movement Count

SR 684 (Cortez Road)		SR 684 (Cortez Road)	
(26) 25	(0) 0	(1) 3	(0) 0
(60) 51	(0) 1	(27) 16	(0) 7
(1) 0	(0) 1	(1,047) 842	(0) 0
(2) 8	(11) 21		

XX – 12:00 to 1:00 PM
(XX) – 5:00 to 6:00 PM
(data collected on February 8th, 2023)

PROPOSED DESIGN IMPROVEMENTS

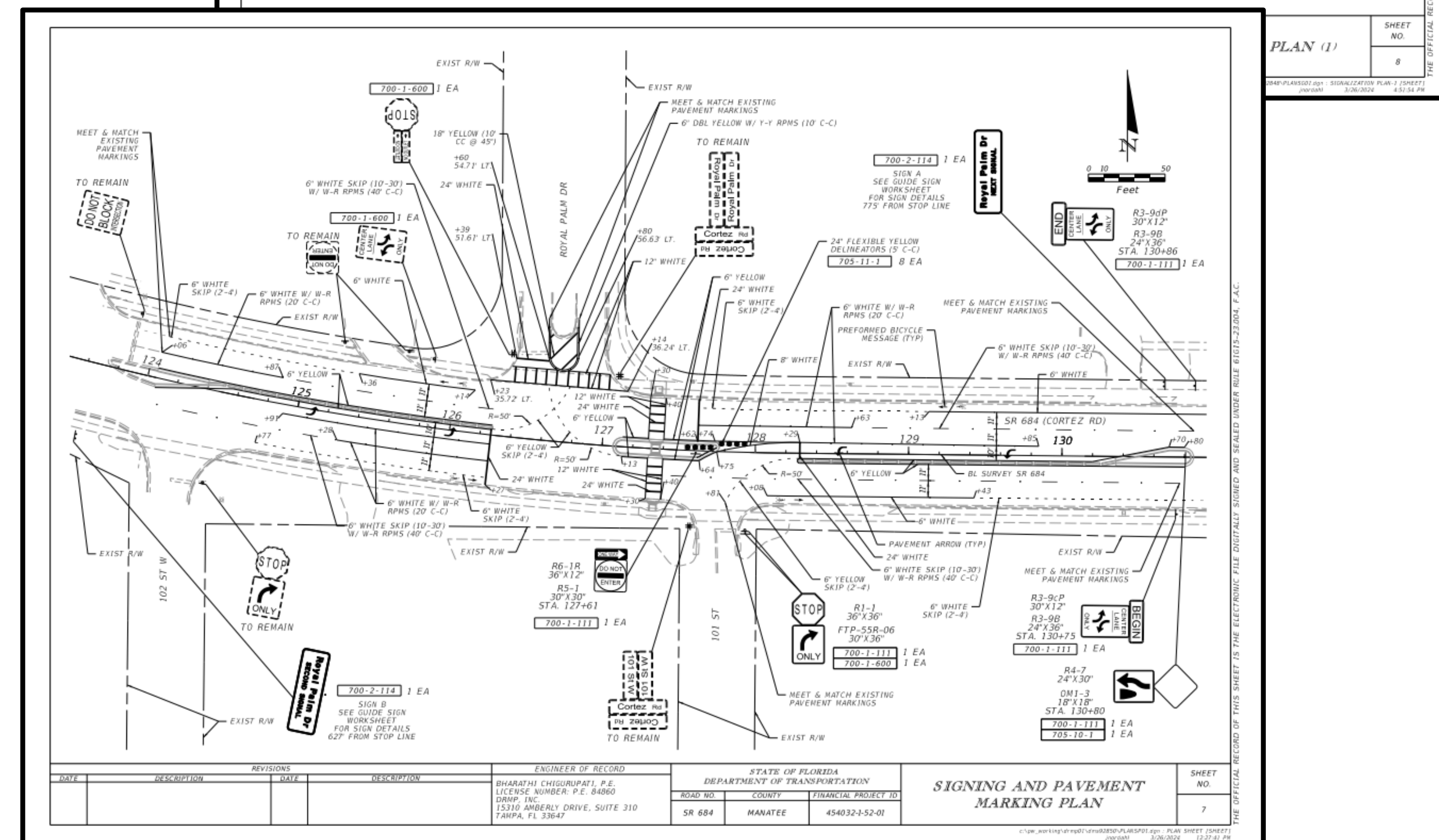
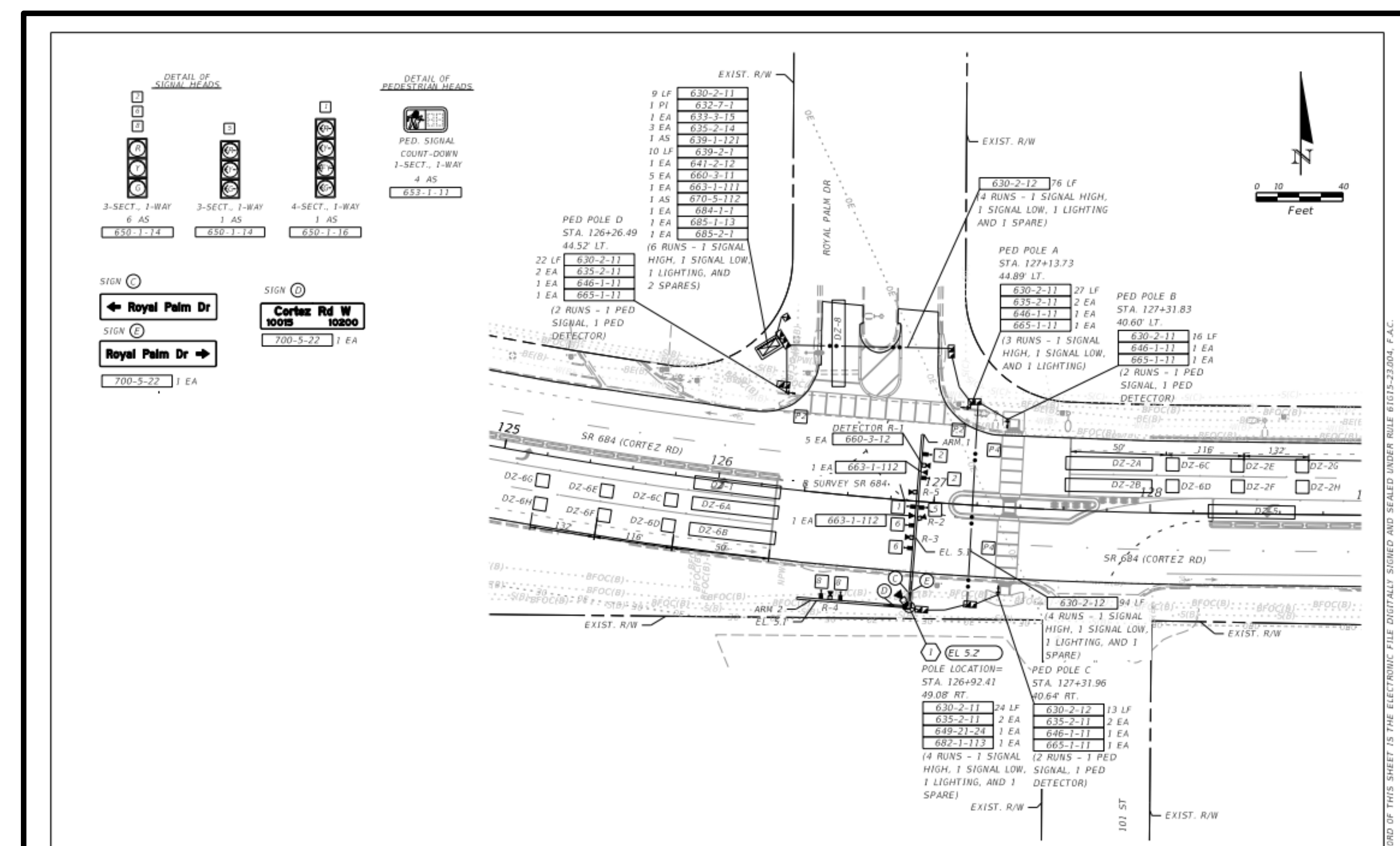


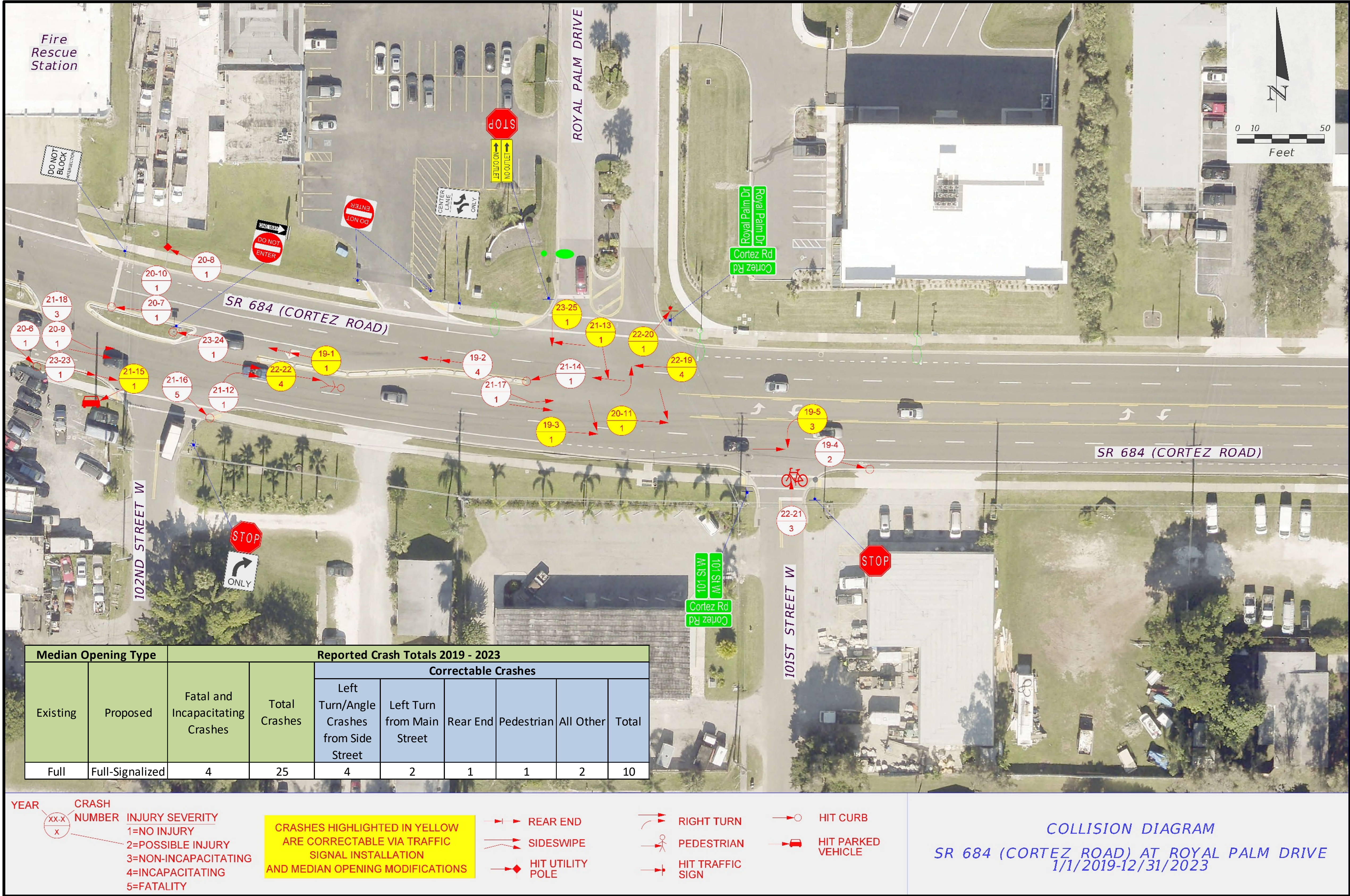
PROPOSED DESIGN IMPROVEMENTS

- Traffic signal at Royal Palm Drive with eastbound/westbound protected-permissive left turn movements (flashing yellow arrows)
- Signalized pedestrian crosswalk across the east approach
- Eastbound and westbound left turn lanes extended with raised traffic separators
- Raised pedestrian refuge/directional island at 101st Street W
- Current Status: 60% design
- Construction in Summer 2025

PROPOSED DESIGN BENEFITS

- Improved safety – reduction in total crashes
- Improved intersection awareness
- Improved pedestrian safety
 - Nearest signalized pedestrian crossing is nearly 1 mile away
 - Visually impaired pedestrians in the area
- Signal will provide traffic gaps - safer entry to SR 684 from adjacent side streets
- Access management - Mitigate side street related crashes immediately adjacent to Royal Palm Drive






LEGEND

 EXISTING
EMERGENCY
SIGNAL

 PROPOSED
TRAFFIC
SIGNAL

 New way to access
102nd St W from
westbound SR 684

 New way to exit 102nd St W
and 101st St W to head west
on SR 684

