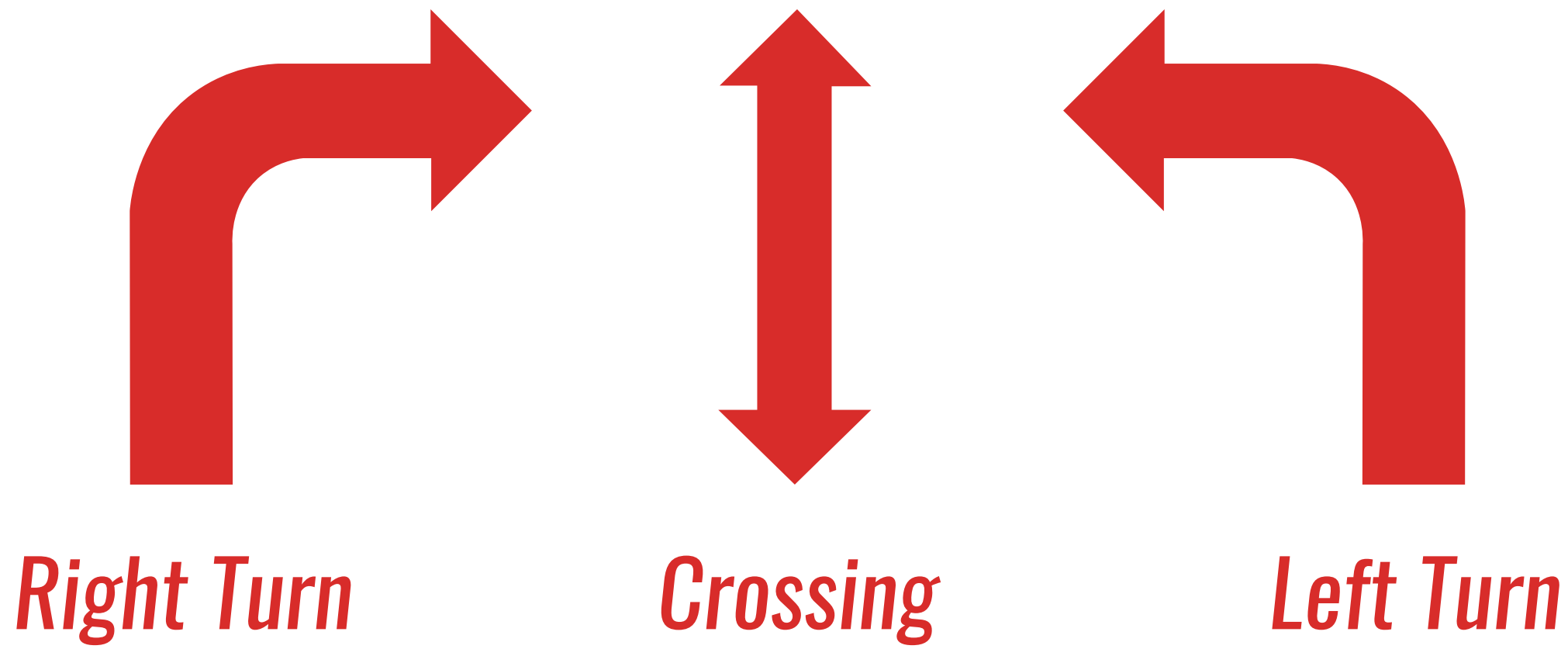


Intersection & Median Safety Concerns

Why Are We Doing This?

- 30% of all traffic fatalities occur from intersection-related crashes

Source: Signal 4 Analytics, 2024



Crash Causes

Misjudgment of Gap or Other's Speed	Increased Traffic Congestion	Distracted or Inattention
Line of Sight or Obstructed View	Right of Way Construction	Illegal Maneuver

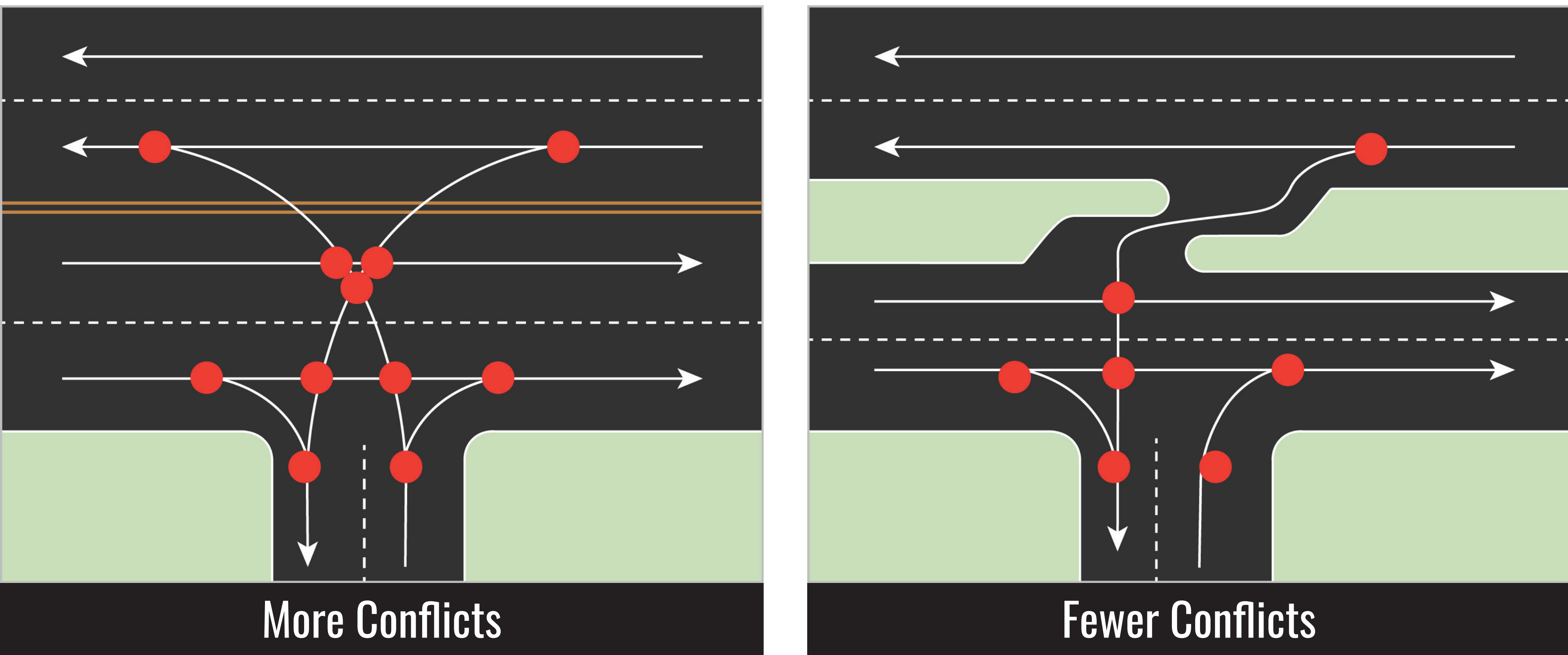
Median Opening & Conflict Points

- Conflict Points: areas where paths legally cross within an intersection
- Reducing the number of conflict points increases safety
- Changing crash types increases safety



Restricting the number of conflict points reduces fatal and injury crashes by 54%

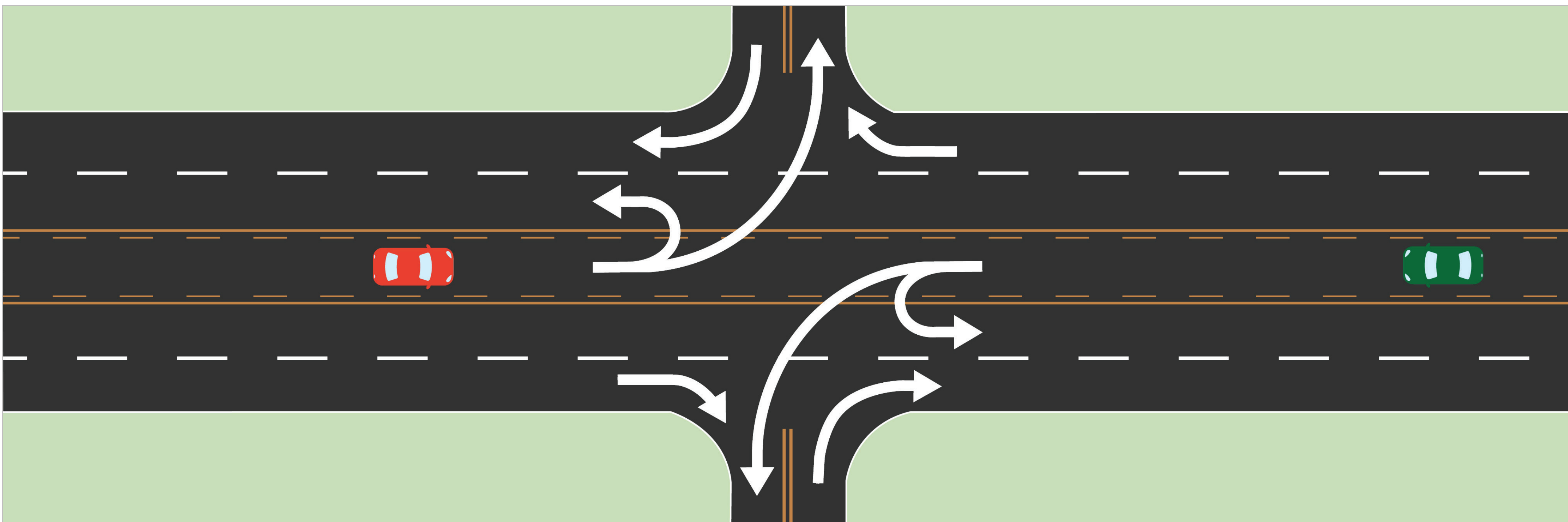
Source: Federal Highway Administration, Reduced Left-Turn Conflict Intersections



Source: FDOT Access Management Brochure

Directional Median Opening

Before Installation: More Conflicts



LEGEND Non-traversable zones Traversable turn lanes

After Installation: Fewer Conflicts

